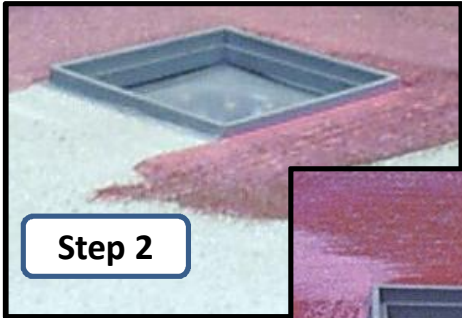


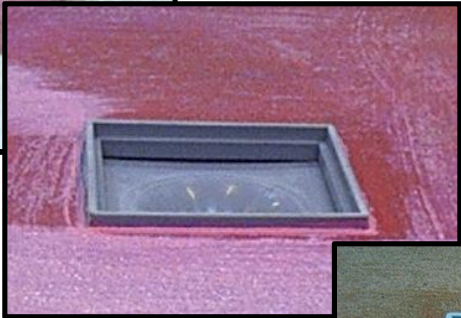
Installation instruction, drains in concrete and tiled floor



Step 1: Important!!! There shall be space for tiles and tile adhesive +2-3mm for the sealing sleeve and tanking membrane.



Step 2: Apply the Primer



Step 2: Primer must dry according to suppliers standard before step 3.



Step 3: Put the sealing sleeve over the drain.



Step 4: Press the sealing sleeve with a flat object and cut on the inside a square according to the gully with a sharp knife.



Step 5: Apply tile adhesive in the frame.



Step 6: Apply two layers of Tanking membrane



Step 7: Apply tile adhesive and the tiles to finish the installation.